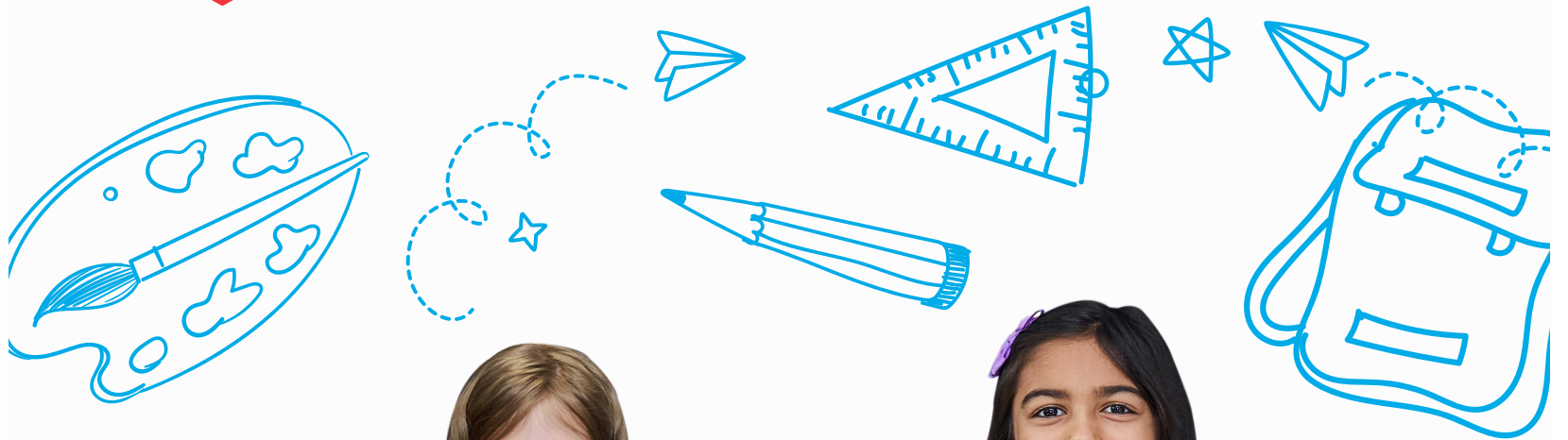




**Stamford American**  
INTERNATIONAL SCHOOL



# Elementary School

Grades 1 to 5

Embracing Diversity:  
Celebrating Ideas,  
Perspectives, Cultures,  
and You!

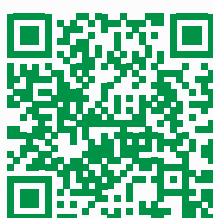


Discover the transformative power of Elementary education at Stamford American International School, where we believe that enjoying school is paramount to success. We prioritize creating a safe, nurturing environment where every student feels seen, valued, and happy to learn. Our holistic approach fosters a love of learning that ignites curiosity and drives academic achievement. Join us in empowering your child to thrive academically, socially, and emotionally as they embark on a journey of growth, discovery, and lifelong learning.

Stamford American Elementary School is designed for students from Grades 1 to 5 and welcomes children from 6 to 11 years of age.



Find out more



# Welcome message

**Clare Johnstone**

Elementary School  
Principal

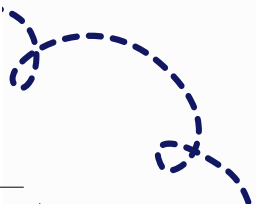


We are thrilled that you are considering joining our elementary school. At Stamford, we are proud of our positive school culture where every member of our community feels a sense of belonging and everyone feels valued and supported.

Our dedicated and experienced teachers are passionate about implementing our learning program that empowers our students to reach their fullest potential. Through this approach, we cultivate fully engaged and active learners who are prepared to excel in an ever-evolving global landscape.

Our commitment to academic excellence means our students can thrive in an international world. With a rigorous curriculum and a focus on developing essential skills for success, Stamford elementary students emerge as academically strong individuals ready to make a meaningful impact on the world around them.

We look forward to welcoming you to the Stamford family and embarking on this exciting educational journey together.



# Primary Years Programme

At Stamford American we encourage students to be open-minded, reflective inquirers and thinkers, whether it be in terms of their academics, interests, or the world around them. We challenge students to intellectually engage, equipping them for excellence for lifelong learning.

The Stamford American Elementary School Curriculum is based on the American AERO Standards and it is taught within the framework of the International Baccalaureate (IB) Primary Years Program (PYP). The AERO Standards guide our teaching content at Stamford American. They outline the essential skills and knowledge your child will acquire at each grade level, ensuring a well-rounded and age appropriate education. These standards work in conjunction with our PYP approach to teaching and learning to best support your child's academic growth and development.





"I feel that the school has a good balance in terms of academics and developing my son's skills and ability to think. It provides him a safe environment to express himself."

**Thais**  
Grade 1 parent



# Holistic Approach



At Stamford American, we prioritize holistic learning, integrating activities that foster self-confidence, communication, collaboration, and critical thinking to enrich students' overall experience. These components are seamlessly integrated into our daily regular lessons:

- Approaches to Learning
- International Mindedness
- Social-Emotional Learning and Wellbeing
- IB Learner Profile

## Approaches to Learning



These are cross-curricular skills integrated into every facet of learning, from explicit teaching and inquiry based learning in the homeroom and specialist lessons, to field studies, co-curricular activities, sports competitions, and artistic performances.

- Communication skills
- Research skills
- Thinking skills
- Social skills
- Self-management skills



## International Mindedness

- Embracing diversity and commonalities
- Engaging and learning about the local community
- Fostering unity among youth
- Developing integrity and confidence

## Social-Emotional Learning and Wellbeing

Each week, all students participate in a structured advisory program focused on social-emotional learning (SEL), which includes weekly online check-ins and the Second Step program. This approach helps students develop emotional literacy, understand how their brain works, and build essential skills for maintaining positive relationships and effective self-management. In the Elementary school, our program emphasizes four key areas: learning skills and strategies, developing empathy, emotional regulation, and problem-solving, laying a strong foundation for students' social and emotional development.



## IB Learner Profile

The aim of the Primary Years Programme (PYP) is to develop internationally minded people who, recognizing their common humanity and shared guardianship of the planet, help to create a better and more peaceful world.

Our school focuses on developing a series of attributes in the students that make up the PYP Student Profile.

"A school that provides not only academics but social living and mental health management. A group of dedicated teachers and team who build confidence in the students to get ready for the grown-up world!"

**Lee**  
**Grade 4 parent**



**Balanced**



**Reflective**



**Risk - Takers**



**Caring**



**Thinkers**



**Open-minded**



**Knowledgeable**



**Principled**



**Inquirers**



**Communicators**





# Core Instructional Programme

A variety of disciplines for greater connection and relevance



The transdisciplinary framework of the Stamford American curriculum and the approaches to teaching and learning in PYP allow students to gain in ways that enriches their experiences. Students learn in the context of what is significant and relevant to them by asking questions and making connections to their previous knowledge, experiences, and their readiness and interest level.

At the core of our curriculum are the traditional subjects of Language Arts, Mathematics, Science and Social Studies. Woven within all of these subject areas are explicit teaching and learning opportunities in digital learning, important library and research skills;

and the development of personal and social competences.

These integrated elements of the curriculum are also threaded into the specialized disciplines every Stamford American PYP student engages in. These include daily foreign language instruction (Mandarin or Spanish), Visual and Performing Arts (Drama, Music and Visual Arts) and Physical and Health Education. Overall, this design ensures students engage in a rigorous academic program that is connected and relevant, while including a wide array of disciplines, for varied interests and better engagement.



# Language Programs



## Daily Mandarin or Spanish

We offer daily Mandarin or Spanish instruction taught by native-speaking educational specialists. Our elementary language program immerses students in dynamic, interactive lessons that build strong communication skills through speaking, listening, reading, and writing. By fostering cultural awareness and critical thinking, we prepare students to become confident global citizens with a love for languages.

## Bilingual Mandarin/English

We offer a Mandarin/English Bilingual program across Grades 1 - 5, fostering strong literacy and communication skills in both languages. This program is tailored for children with age-appropriate English skills seeking a more immersive mandarin language experience. Our bilingual program offers a one-teacher framework which models true bilingualism on a daily basis for our students.

## English as an Additional Language (EAL)

Our program provides multiple pathways to support multilingual learners, offering holistic support throughout their English language journey. Tailored assistance is provided based on each student's individual academic needs, determined by their English proficiency level.

Our program is responsive and students' pathways are adjusted to maximize growth and language development.

"The school takes great care of the physical and mental health of the children. I'm grateful to the school for their concern and care for the children."

**Guangmei**  
**Grade 4 parent**



# Specialist Areas



## Visual Arts

Our Visual Arts program offers an immersive journey of self-expression and discovery, where students unlock their creative potential and sharpen their aesthetic sensibilities. Through hands-on creation and thoughtful interpretation, students engage deeply with visual expression, learning to communicate ideas and emotions in powerful and captivating ways. By fostering imagination, honing technical skills, and promoting critical thinking, we equip students with the tools to thrive in today's visually driven world.



## Music



Music enhances concentration and sparks creative growth. Our program, including Choir, Orchestra, World Music Percussion Ensemble, and concerts, offers students enriching experiences both in and beyond the classroom. Music engages students in singing, instrument playing, and composition. Students develop skills to read, notate, and analyze music, fostering cultural awareness and collaboration. Our program fosters cultural awareness and appreciation, preparing students to succeed in an interconnected world through a rich musical journey.



## Drama

Our Drama program provides a dynamic environment for students to explore and develop their theatrical talents both in and out of the classroom. At Stamford, drama goes beyond performance—it's about cultivating essential communication and social skills while fueling creativity and imagination. Our elementary students embark on a transformative journey of self-discovery, growing into confident risk-takers and creative problem-solvers. Through physicality, voice, and expression, students craft compelling characters and bring stories to life on stage.



## Physical Education

At Stamford, our Physical Education program introduces various sports and activities, fostering a lifelong love of fitness and active play. Students develop skills in team sports and individual activities. Alongside physical skills, we emphasize the importance of health and well-being, helping students understand how an active lifestyle supports social, emotional, and physical health.



"We were very anxious for my son when we moved. Within the first week, he was loving the school more than his previous school in India. The teachers are wonderful, and there are so many co-curricular activities for the holistic development of kids."

**Nidhi**  
Grade 5 parent



Scan to view  
student-led  
campus tour



# Our Facilities

Library

Swimming pool

Washington Plaza

Stamford Field

Jefferson Arena

Makerspace

Outdoor Cafeteria

Purpose-built spaces



"Excellent facilities, lots of fun events, friendly staff, and the teachers I've had so far have been great. Language support is also available. The most important thing is that the children seem to be having fun going to school."

**Hirayama**  
Grade 5 parent

# Beyond Academics

Through hands-on projects and real world challenges, our students grow both academically and as global citizens.



## 350+ after school activities

## Field studies



## Location of Stamford American International School



School fees





# Our Community

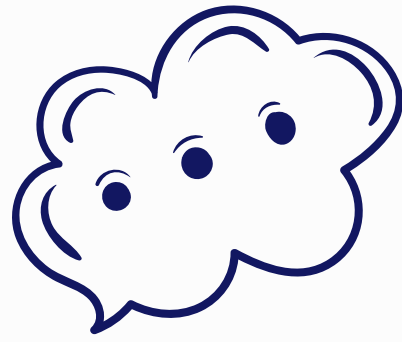
At Stamford, we pride ourselves on being an inclusive school. We strive to create a sense of belonging for every member of our community, and to shape a learning environment tailored to the individual needs of each student. We commit to:

- Knowing each student well as a person and learner;
- Ensuring full access and engagement with the curriculum;
- Designing opportunities which capitalize on interests and strengths;
- Creating opportunities for students, families, and staff to engage and feel valued within the community; and
- Supporting student wellbeing through a comprehensive Advisory program that fosters personal growth and emotional resilience.

Our approach creates powerful learning communities which prioritize the holistic view of the child, helping each student to thrive.

As a community we celebrate our diverse backgrounds, which helps students develop empathy and respect for others.





## What our teachers say



*"Our library learning space is incredible because it features cozy reading nooks and a state-of-the-art environment, creating a perfect blend of comfort and innovation. Our library fosters diversity, equity, and inclusion with accessible resources, multilingual materials, and welcoming spaces for students of all backgrounds to collaborate and thrive."*

**Rachel Shellman**  
Librarian



*"I love teaching in the Elementary School. The students inspire me with their zest for life and learning. Seeing the joy on their faces when they overcome a challenge or perform a skill they have been working towards is why I love teaching."*

**Matthew Jenkins**  
Physical Education teacher



*"I think I have never worked in a school like this before. Its unique atmosphere of teaching in a classroom full of possibilities makes it a wonderful place to be. The diversity of students, their personal journeys, and their eagerness to learn about languages and other cultures align perfectly with our passion for education."*

**Nicolle Jay Villamizar**  
Spanish teacher



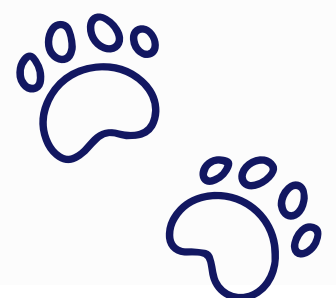
*"I love the 'sharing is caring' culture here in SAIS. It has fostered collaboration, making me a more open-minded teacher and a stronger team player."*

**Daisy Ye**  
Grade 4 Bilingual teacher



*"One of the best parts of teaching at SAIS is sparking students' curiosity and love for learning. Introducing ideas through the idea of concepts allows students to question and explore new topics which keep the classroom dynamic and exciting."*

**Helen Dunn**  
Homeroom teacher and  
Head of Grade 5



# Stamford American INTERNATIONAL SCHOOL



**WOODLEIGH CAMPUS  
(ELEMENTARY AND SECONDARY)**

1 Woodleigh Lane, Singapore 357684

T: +65 6653 2949

E: [admissions@sais.edu.sg](mailto:admissions@sais.edu.sg)

[www.sais.edu.sg](http://www.sais.edu.sg)



Stamford American International School PEI Registration Number: 200823594D  
Period of registration: August 9, 2022 to August 8, 2026